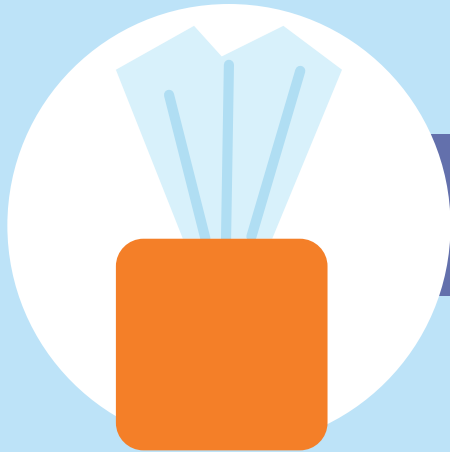


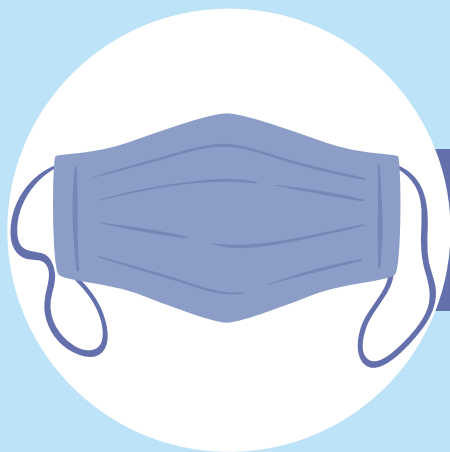
# COVER YOUR COUGH

*Stop the spread of germs that can make you and others sick!*



Cover your mouth and nose with a tissue when you cough or sneeze. Put your used tissue in the waste basket.

If you don't have a tissue, cough or sneeze into your upper sleeve or elbow, not your hands.



You may be asked to put on a facemask to protect others.

Wash hands often with soap and warm water for 20 seconds. If soap and water are not available, use an alcohol-based hand rub.

